

# Protectli Firewall Appliances

*Revised 05/04/2021*

---

Protectli is the preferred source for firewalls in the United States, distributing worldwide. Protectli uniquely provides a trusted hardware platform with advanced firmware protection.

## Protectli Vault

### Trusted Hardware



Compact, 100% silent and backed by our US-based support team: The Vault features Intel CPUs, SSDs throughout, and comes with up to 6 Ports.

### Open Source Ready



All Vaults are OS agnostic and support the popular open source firewall distros like pfSense, OPNsense, and OpenWRT.

### Tested Software Compatibility



All Vaults are tested for compatibility with a variety of Operating Systems, supporting Windows, linux, \*BSD, and hypervisors like Proxmox, XCP-NG and VMWare ESX.

### 4G LTE Failover

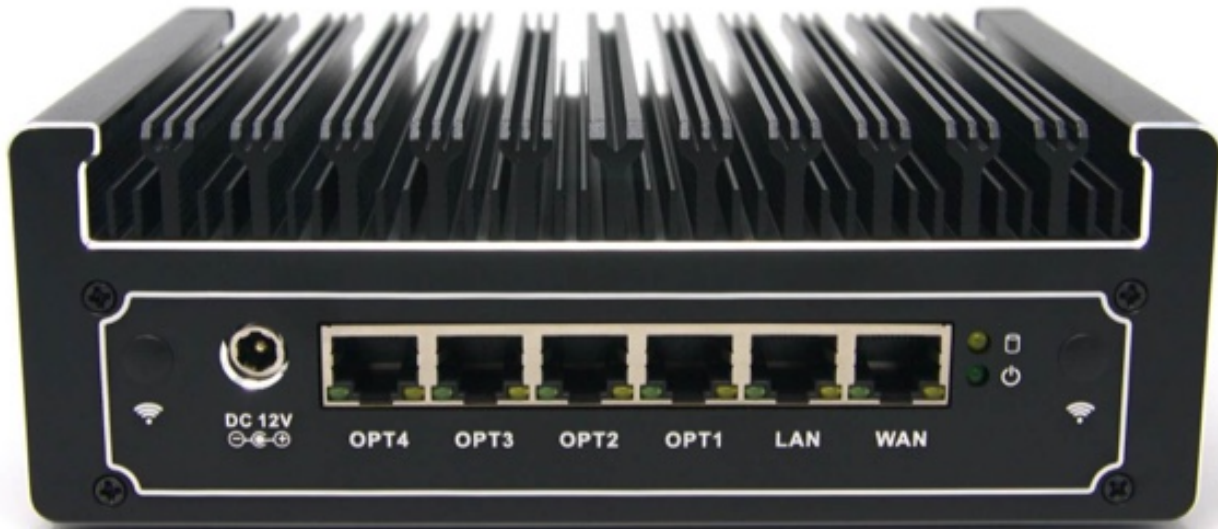


Never lose internet connectivity if you add the Protectli 4G LTE Modem for failover. Verizon and AT&T plans are available, or provide your own SIM.

# FW6E-Series Data Sheet

<b>Model</b>	FW6E
<b>Description</b>	6 Network Port Fanless Appliance
<b>Processor</b>	Intel Kaby Lake R i7-8550U (64 Bit, 1.8GHz base, 4GHz Turbo, 8MB Intel Smart Cache)
<b>Processor Cores</b>	4
<b>Processor Threads</b>	8
<b>Intel AES-NI</b>	Supported
<b>Network</b>	6x Intel Gigabit Ethernet, RJ-45
<b>Graphics</b>	Intel Integrated UHD Graphics 620
<b>Video</b>	1x HDMI
<b>Memory</b>	2x SO-DIMM Dual Channel DDR4-2133/2400/2666 (runs at 2400), Max 64GB
<b>Storage</b>	1x mSATA SSD, Max 1 TB
<b>Optional Storage</b>	1x Internal 2.5 in HDD
<b>External I/O</b>	6x Intel Gigabit Ethernet, RJ-45 4x 3.0 USB 1x HDMI 1x RJ-45 COM 1x 12V DC Power Jack 2x WiFi Antenna Mounting Holes
<b>Internal I/O</b>	2x SO-DIMM 1x MINI PCIe for mSATA 1x SATA 1x MINI PCIe only for optional Protectli WiFi Kit 1x CPU Fan Header
<b>Wireless</b>	Optional 802.11b/g/n WiFi Kit (Protectli P/N: WAP01K)
<b>Indicators</b>	1x LED Power Button (Blue) 1x LED Power Indicator (Green) 1x LED Disk Activity Indicator (Yellow)

<b>Power</b>	Input 12V DC
<b>Power Usage</b>	Idle 20W; Max 90W
<b>Chassis</b>	Fanless, Aluminum, Black
<b>Chassis Dimensions</b>	184 x 127 x 63.5 mm, 7.25 x 5 x 2.5 in
<b>Mounting Options</b>	Desktop, VESA Bracket
<b>Weight</b>	3 lbs, 1.36 Kg
<b>Shipping Weight</b>	5.125 lbs, 2.32 Kg
<b>Operating Temperature</b>	-10° - +50° C, +14° - +122° F
<b>Operating Humidity</b>	0 – 95% relative humidity, non-condensing
<b>Approvals</b>	FCC Part 15
<b>Country of Origin</b>	Made in China. Assembled in USA.



## Rear View

